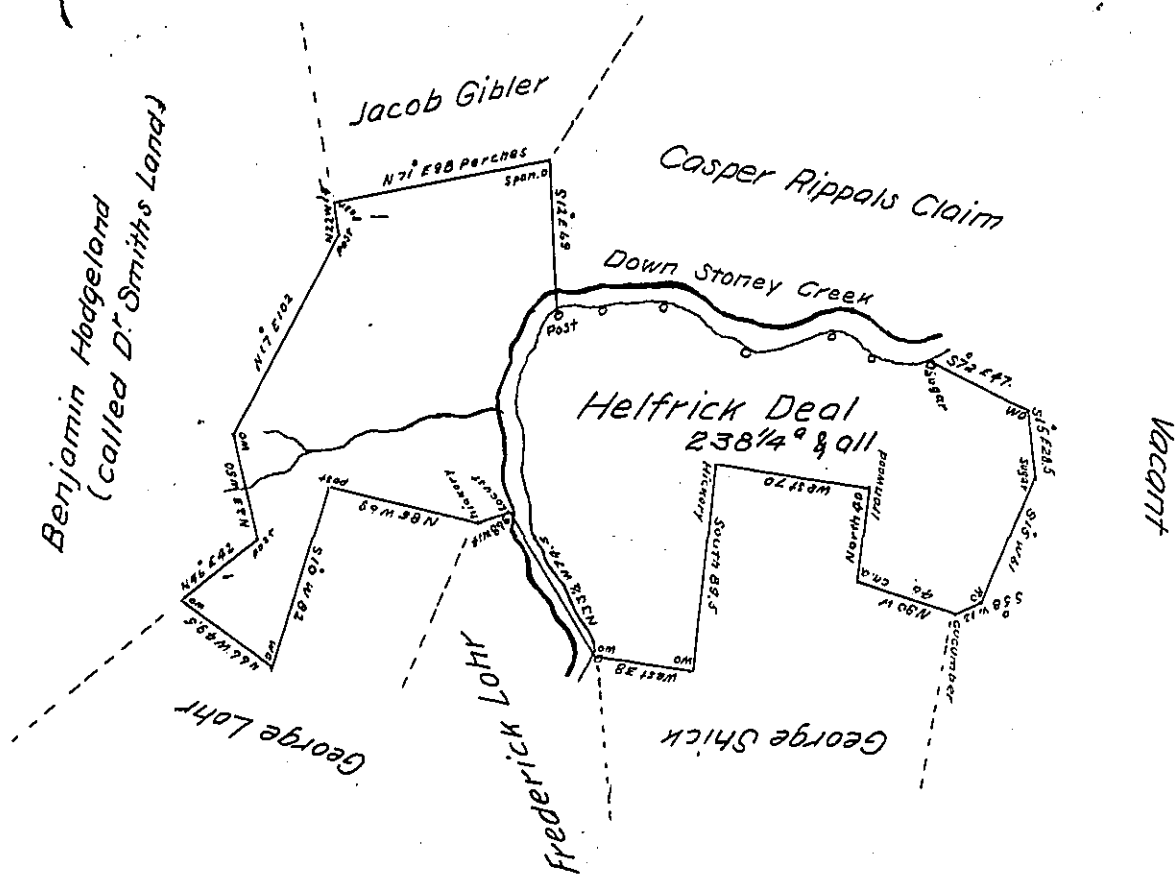


Courses & Distances down Stoney Creek

N 69° E 22
 S 83° E 28
 S 72° E 40
 N 72° E 41.5
 S 67° E 20
 S 88° E 22.5
174.0 ps



(N.B. the above tract was unimproved when the Warrant issued)

Situate on both sides of Stoney Creek, in Quemahoning & Shady Creek townships, Somerset County (late Bedford) and Surveyed the 13th day of August 1799 by me under a former deputation In pursuance of a Warrant granted to Helfrick Deal for 200^a dated the 15th day of March 1794 (and probably returned by John M^c.Clean Esquire late deputy Surveyor) I have on the 13th day of July 1817 Resurveyed the same making alterations conforming to the wishes of all concerned, and it is prayed Patent may issue agreeably to this return, which is made for the owner to Comply with the Act to authorize the officers of the Land office to accept returns of Surveys and to direct patents to issue where there is an excess of more than ten P Cent returned passed 13th March 1817

To Jacob Spangler Esquire
 Surveyor General of Pennsylvania

John Wells Deputy

IN TESTIMONY that the above is a copy of the original remaining on file in the Department of Internal Affairs of Pennsylvania, made conformably to an Act of Assembly approved the 16th day of February, 1833, I have hereunto set my Hand and caused the Seal of said Department to be affixed at Harrisburg, this twentieth day of July 1904

James R. Brown
 Secretary of Internal Affairs.